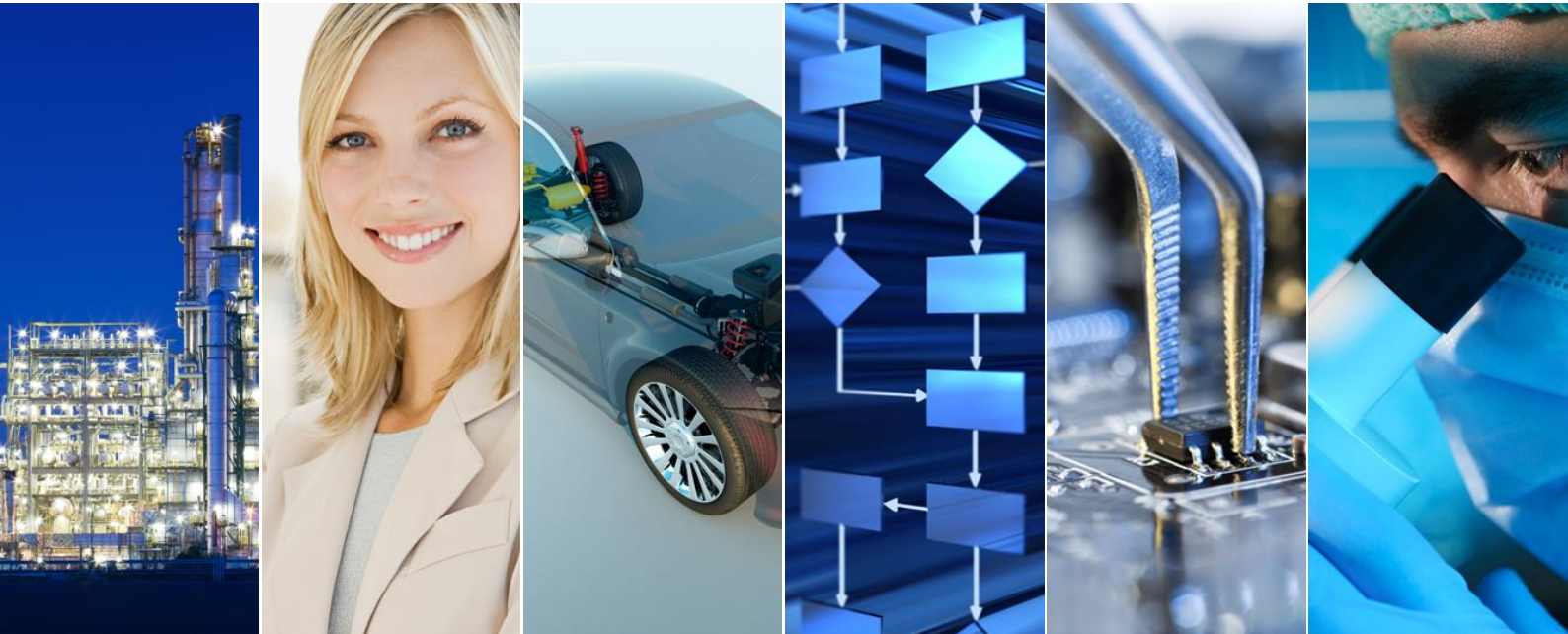


ADVANCED APPLICATIONS



FAQ Advanced Manufacturing Integration of shopfloor processes in SAP ERP

Advanced Applications GmbH
An ATS Company
Rheinwaldstraße 38, 78628 Rottweil, Deutschland
Phone 0741 174416-600, Fax 0741 174416-669

Contents

1	Foreword	3
2	General	3
2.1	How does the Advanced Manufacturing solution work?	3
2.2	What are the benefits of fully integrating the AddOn into SAP?	3
2.3	Does the solution also improve dependent/downstream process?	3
2.4	In which industries is the solution currently used on the market?	4
3	Hardware/Software	4
3.1	What are the system requirements?	4
3.2	Can external sensing devices, such as scales, scanners, RFID readers, be integrated?	4
3.3	Does the solution also work with SAP HANA or SAP S/4HANA systems?	4
3.4	Which printers can be connected?	4
3.5	Which end points are compatible to display the user interface?	5
4	Functions	5
4.1	What features are supported by default?	5
4.2	Are there any other features that can be used to extend the standard solution?	5
4.3	Is the solution available in other languages as a German?	7
4.4	Which reporting functionalities are included?	7
4.5	Can information be sent to other users e.g., the dispatcher by e-mail?	7
4.6	How can Advanced Manufacturing be adapted to customer-specific requirements?	7
5	Licensing	7
5.1	How is the solution licensed?	7
5.2	How is the maintenance fee for the AddOn calculated?	8

1 Foreword

The solution is available for SAP ERP and SAP S/4HANA as Advanced Manufacturing On-Premises. The AddOn is fully integrated into SAP ERP ECC 6.0 or SAP S/4HANA On-Premises and has been in productive use with customers from various industries since 2014.

The following chapters summarize the most important questions and answer them in an understandable way. If further information is necessary, please [contact](#) us.

2 General

2.1 How does the Advanced Manufacturing solution work?

The solution is based directly on SAP standard functions and provides all the information required for the production or assembly of a product via an intuitive user interface at the workplace. In addition, machines and sensors can be connected to Advanced Manufacturing and the functionality thus also provides all information for production-related activities.

The SAP Fiori user interface provides direct service for functions e.g., displaying documents, drawings or work instructions, reporting quantities and/or time events, recording batches and/or serial numbers, and is posted to SAP in real time.

Advanced Manufacturing thus offers many functions integrated into SAP, which are often assigned to external MES systems and meets all current compliance/validation requirements.

2.2 What are the benefits of fully integrating the AddOn into SAP?

The product is fully integrated into SAP and accesses standard functions directly. This eliminates the need to maintain a fault-prone interface that may only be delayed or periodically update the data in SAP. Due to the direct integration, the SAP standard checks are carried out before the data is posted and in the event of an error, the feedback is carried out directly at the terminal. Therefore, complex, subsequent error corrections are a thing of the past. In terms of reporting, up-to-date data is always accessed because the data update is done in real time.

2.3 Does the solution also improve dependent/downstream process?

By recording the data in real time, downstream or dependent processes can immediately access the data and react accordingly. For example, it is possible to pass on the current dates to sales via the disposition.

2.4 In which industries is the solution currently used on the market?

The solution is used by customers in the following industries:

- High tech
- Component manufacturer
- Aerospace
- Mechanical engineering
- Medical

3 Hardware/Software

3.1 What are the system requirements?

SAP ERP ECC 6.0, EHP7 or higher.

The following software components are required in detail:

Component	Release	SP-Level	Support Package	Description
SAP_BASIS	740	0021	SAPKB74021	SAP Basis Component
SAP_ABA	740	0021	SAPKA74021	Cross-Application Component
SAP_GWFND	740	0021	SAPK-74021INSAPGWFND	SAP Gateway Foundation
SAP_UI	752	0006	SAPK-75206INSAPUI	User Interface Technology
WEBCUIF	747	0018	SAPK-74718INWEBCUIF	SAP Web UI Framework
SAP_APPL	617	0018	SAPKH61718	Logistics and Accounting

3.2 Can external sensing devices, such as scales, scanners, RFID readers, be integrated?

Since the solution is fully integrated into the existing SAP functionality, all devices released by SAP can be used. In addition, detection devices can be integrated directly at the front-end devices (based on existing interfaces or customer-specific development). More complex interfaces e.g., machines, are integrated into Advanced Manufacturing via the Interfaces (IF) module.

3.3 Does the solution also work with SAP HANA or SAP S/4HANA systems?

In addition to SAP ERP ECC 6.0 (any DB), the AddOn is also available for systems with a HANA database and for SAP S/4HANA.

3.4 Which printers can be connected?

The solution can access all printers connected to SAP. In addition, the device's local printers can be accessed.

3.5 Which end points are compatible to display the user interface?

The solution works for all network-enabled devices that have a standard browser (Microsoft IE, Google Chrome, Mozilla Firefox, Safari). On mobile devices with an iOS or Android operating system, the SAP Fiori Client can also be used instead of the browser.

4 Functions

4.1 What features are supported by default?

Advanced Manufacturing provides the Core Module (CM) with all the information you need to manufacture the product about the production order and operation. Furthermore, the component list or the overview of the production resource tools can be accessed. The desired work operation is selected from the worklist, which is set by an individual selection and sorting and thus displays the relevant tasks. Different barcode types can be defined via the Core Module for processing barcodes. This central function is used by all other modules to dissolve the barcode into the relevant information for further processing. In addition to the manufacturing information, basic functions for the production order are offered. These include:

- Release of the production order (if the status "REL" is not yet set).
- Printing of production order papers.
- Display of the feedback number as a barcode (if external devices need to be supplied with this information). In addition to the feedback barcode, further information can also be displayed via a customer-specific form.
- Display and selection of associated serial numbers.
- Capture and view notes about the production order (services to the object).
- Attach and display attachments to the production order (services to the object).
- Capture, attach, and view photos and images for the production order.

4.2 Are there any other features that can be used to extend the standard solution?

Yes, in addition to the CM module, additional modules are available for the expansion of the solution, which can be activated if required. The following modules are currently available:

- **Business documents (BD)**
All documents and media for the production order e.g., assembly instructions or drawings, are drawn at run time from the SAP PP standard structures (routing, BOM, etc.) and displayed either in the same or a separate window. This ensures that the correct information is always up to date at the workplace. In addition to displaying PDF files, it is also possible to display 3D models (SAP 3D Visual Enterprise Viewer) or to play videos (formats depending on the browser).
- **Capture of production data (CP)**
The recording of time events and the reporting of yield and scrap quantities is possible via this

module. It is also possible to post the time events as a pay slip in SAP. In addition to the exchange from SOLL to IST workstation, feedback can also be tracked at the serial number level via the module.

- **Interfaces (IF)**

Machines and sensors e.g., test systems, calibration programs or label and label management software can be connected to Advanced Manufacturing via a large number of integration templates. A customer-specific expression of the respective template is possible at any time.

- **Manufacturing logistics (ML)**

The different applications of the module are specially designed for the needs of the production supply. By coloring the component position, it is very quickly recognizable which items have already been processed and which are still to be processed. The user is supported in the best possible way by the integrated inventory and batch determination. There are currently 4 different forms of application available:

- Assignment of batches to component items
- Posting goods issues for components
- KANBAN overview, including the possibility of status management and change
- Posting unplanned component consumption

- **Production-related quality management (PQ)**

If production-related tests are necessary during production, the results or measurement data can be recorded via this module and written back to the corresponding inspection lot. The test specification is given to the module from the QM test plan. In the event of problems during production, be it in the process, with components to be installed or with production aids, a quality or service notification can be created directly from Advanced Manufacturing and handed over to the quality assurance or maintenance department.

- **Reporting (RP)**

The production or assembly monitor informs quickly and easily – similar to the display board at the airport. The monitors provide an overview of the situation of the production plan. By designing the display and displaying the status display via different colors, problems in the production process can be reacted to in a timely manner. The status board updates automatically after the customer-specific interval and provides master and shift leader jumps in standard transactions for de-tailed display of production orders.

- **Traceability (TA)**

With the help of a system-aided scanning process, the serial numbers used in production are recorded and logged in the background in an equipment BOM. The installation and re-installation of an assembly is also possible and is also recorded, whereby a complete history of the equipment is updated.

ADVANCED APPLICATIONS

4.3 Is the solution available in other languages as a German?

Yes, in addition to the German language, English and Turkish are also available by default. Other languages can be integrated if required.

4.4 Which reporting functionalities are included?

All reports set up in SAP ERP / SAP S/4HANA can be used. A number of reports are already delivered with the above-mentioned functions (module RP) and can be customized.

4.5 Can information be sent to other users e.g., the dispatcher by e-mail?

Yes, mail integration is available in the standard. This means that, for example the dispatcher can be informed directly by the operator in the event of missing parts. The different workflow scenarios are freely definable.

4.6 How can Advanced Manufacturing be adapted to customer-specific requirements?

Durch zahlreiche Customizing-Einstellungen kann das Produkt individuell an Kunden bzw. Prozess-Anforderungen angepasst werden. Neben dessen stehen zahlreiche User-Exits zur modifikationsfreien Anpassung des Standards zu Verfügung.

Sollten all dieses Einstellungen nicht ausreichend sein, führt die AA auf Kundenwunsch eine komplette Individualisierung z.B. des Frontend durch.

Thanks to numerous customizing settings, the product can be individually adapted to customers or process requirements. In addition to this, numerous user exits are available for the modification-free adaptation of the standard.

If all these settings are not sufficient, the AA performs a complete individualization on customer wash e.g., of the front end.

5 Licensing

5.1 How is the solution licensed?

Advanced Manufacturing is not sold through a classic licensing model but can be rented by the customer in the desired form and a defined period of time.

A monthly base price is used to license each plant in which the solution is in use. In addition, a rental license is required per screen workstation (= terminal device). The modules used are invoiced monthly, regardless of the factory.

5.2 How is the maintenance fee for the AddOn calculated?

The maintenance is covered by the monthly rent.